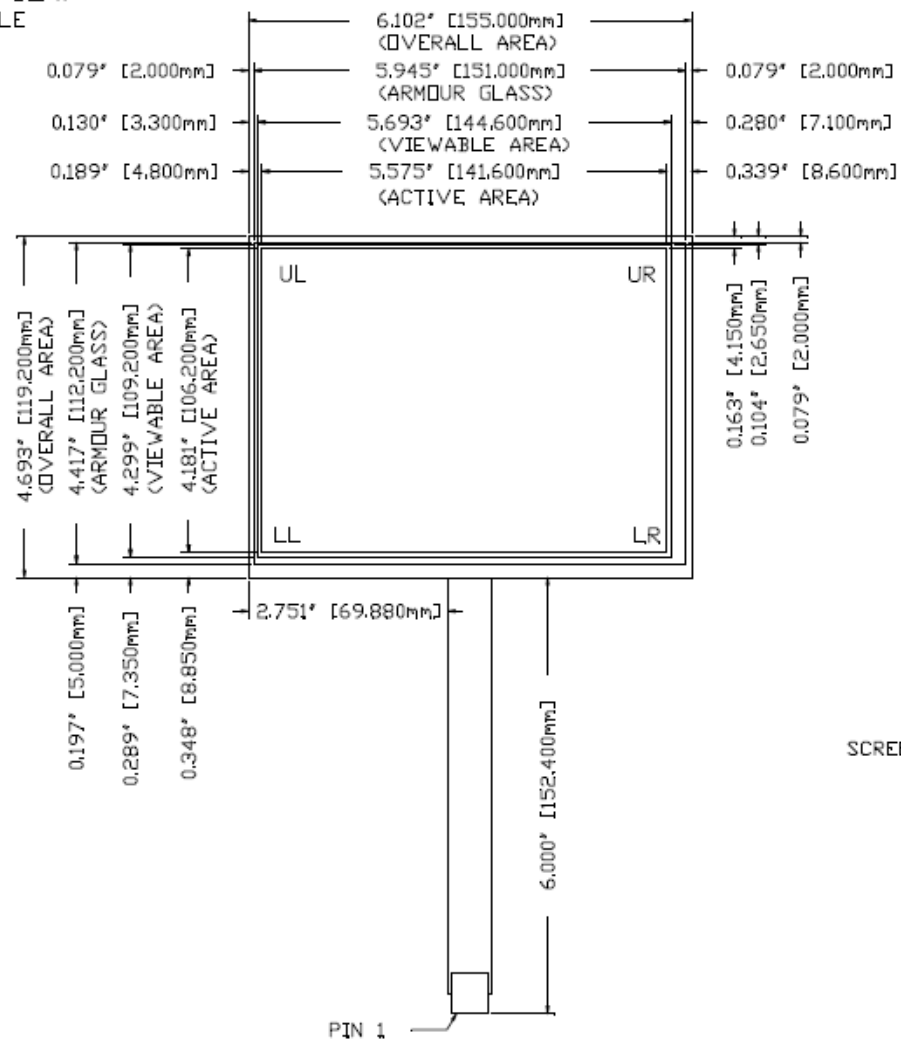


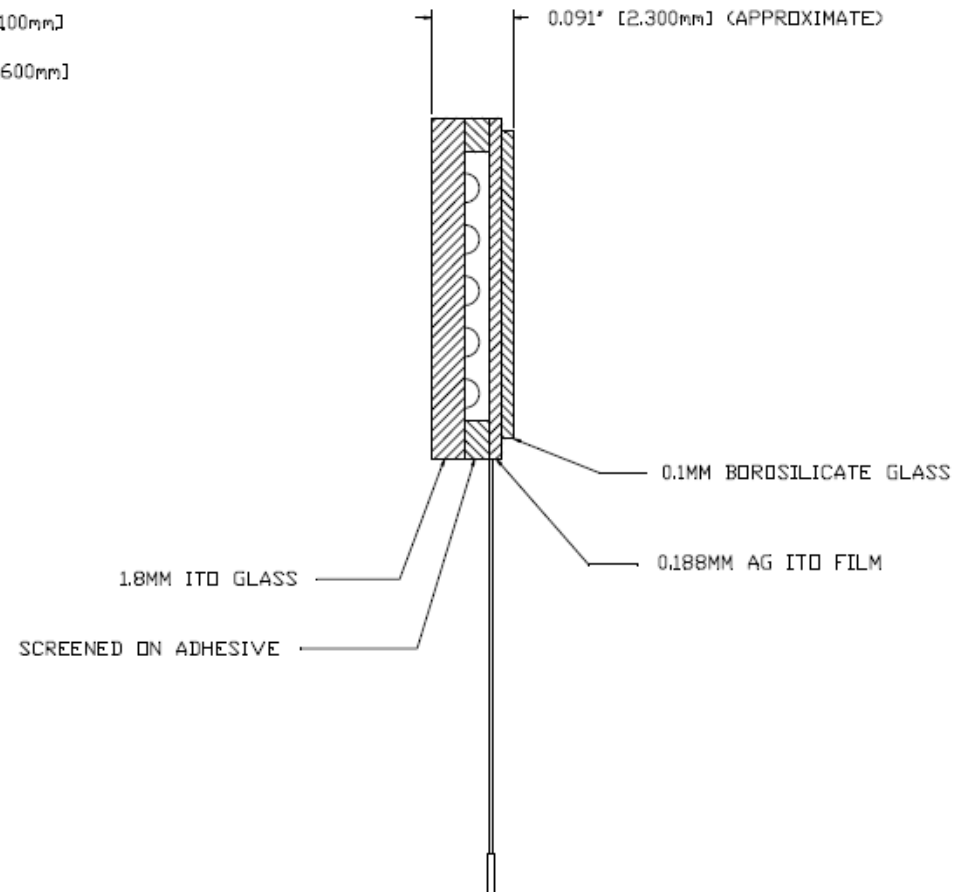
FRONT VIEW

NOT TO SCALE

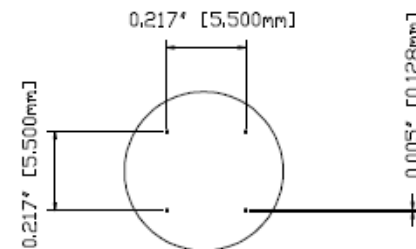


SIDE VIEW

NOT TO SCALE



PIN	DESC
1	UL
2	LL
3	SENSE
4	LR
5	UR



DETAIL A - DOT SPEC
 SCALE 5:1

NOTES:

1. SUBSTRATE: 1.8MM ITO GLASS
2. ALL DIMENSIONS IN INCHES [MILLIMETERS]
3. SAFETY SEAM ON ALL EDGES
4. CABLE: 5-PIN FPC TYPE
5. CONNECTOR: NON-LATCHING AMP TYPE WITH 0.1' [2.54MM] CENTRES, PART NUMBER 487378-4
6. TOUCH SCREEN TO BE ACTIVATED WITHIN ACTIVE AREA ONLY, NON-ACTIVE AREA MUST HAVE SCREENED ON DIELECTRIC AND NO CONDENSED DOTS. VIEWABLE AREA MUST BE TRANSPARENT WITH NO LINEARITY PATTERN VISIBLE.
7. TOTAL SENSOR THICKNESS: 0.091' [2.300MM]