



## SLO1568 V3 15" TFT LCD Monitor, LED Backlight 1,600nits,XGA(1024x768)

SLO1568 TFT LCD monitor, built-in 1600 nits high brightness for sunlight readable display. It offers the best visibility, performance and cost effective value. The high level of brightness together with the optimal contrast ratio renders high quality images and enhances legibility. With its fast response time and LED backlight technology, the monitor brings remarkable display quality and durability for your applications. Suitable for marine, military, medical, transportation, and industrial application.

### Key Features

- Brightness: 1600nits
- LED Backlight
- XGA(1024x768) High Definition
- High Shock & Vibration Resistance
- Low Power Consumption
- High Uniformity
- Low EMI Noise
- Wide Dimming



### Specifications

V1

<b>Model No.</b>	SLO1568 V3
<b>Description</b>	15" TFT LCD Monitor, LED Backlight 1,600nits,XGA(1024x768)
<b>Display Area (mm)</b>	304.13(H) x 228.1(V) mm
<b>Brightness</b>	1600 cd/m <sup>2</sup>
<b>Resolution</b>	1024x768 (XGA)
<b>Contrast Ratio</b>	1000 : 1
<b>Pixel Pitch (mm)</b>	0.297(H) x 0.297(V)
<b>Pixel Pre Inch (PPI)</b>	85
<b>Viewing Angle</b>	+80°~ -80°(H), +80°~ -80°(V)
<b>Color Saturation (NTSC)</b>	69%
<b>Display Colors</b>	16.7M
<b>Response Time (Typical)</b>	8ms
<b>Operating Temperature</b>	-20°C ~ 70°C
<b>Storage Temperature</b>	-30°C ~ 80°C
<b>Power Consumption</b>	17W
<b>Dimensions (mm)</b>	350.5x253.5x30.6mm
<b>Weight (Net)</b>	1.3kg
<b>LED Driving Board</b>	LID15A
<b>Control Board (Optional)</b>	<input type="checkbox"/> AD6038GA <input type="checkbox"/> AD6038GD
<input type="checkbox"/> AD6038GA	VGA+Audio
<input type="checkbox"/> AD6038GD	VGA+DVI
<b>F / R Control Button</b>	<input type="checkbox"/> 4 Key
<input type="checkbox"/> 4 Key	Power Switch, Menu, Select (+,-),
<b>OSD Menu</b>	Brightness, Contrast, H/V Position, Color, Phase, Clock...
<b>Optional</b>	<input type="checkbox"/> AOT <input type="checkbox"/> Touch Screen

Specifications are subject to change without notice.

All brands or product names are trademarks or registered trademarks of their respective companies.

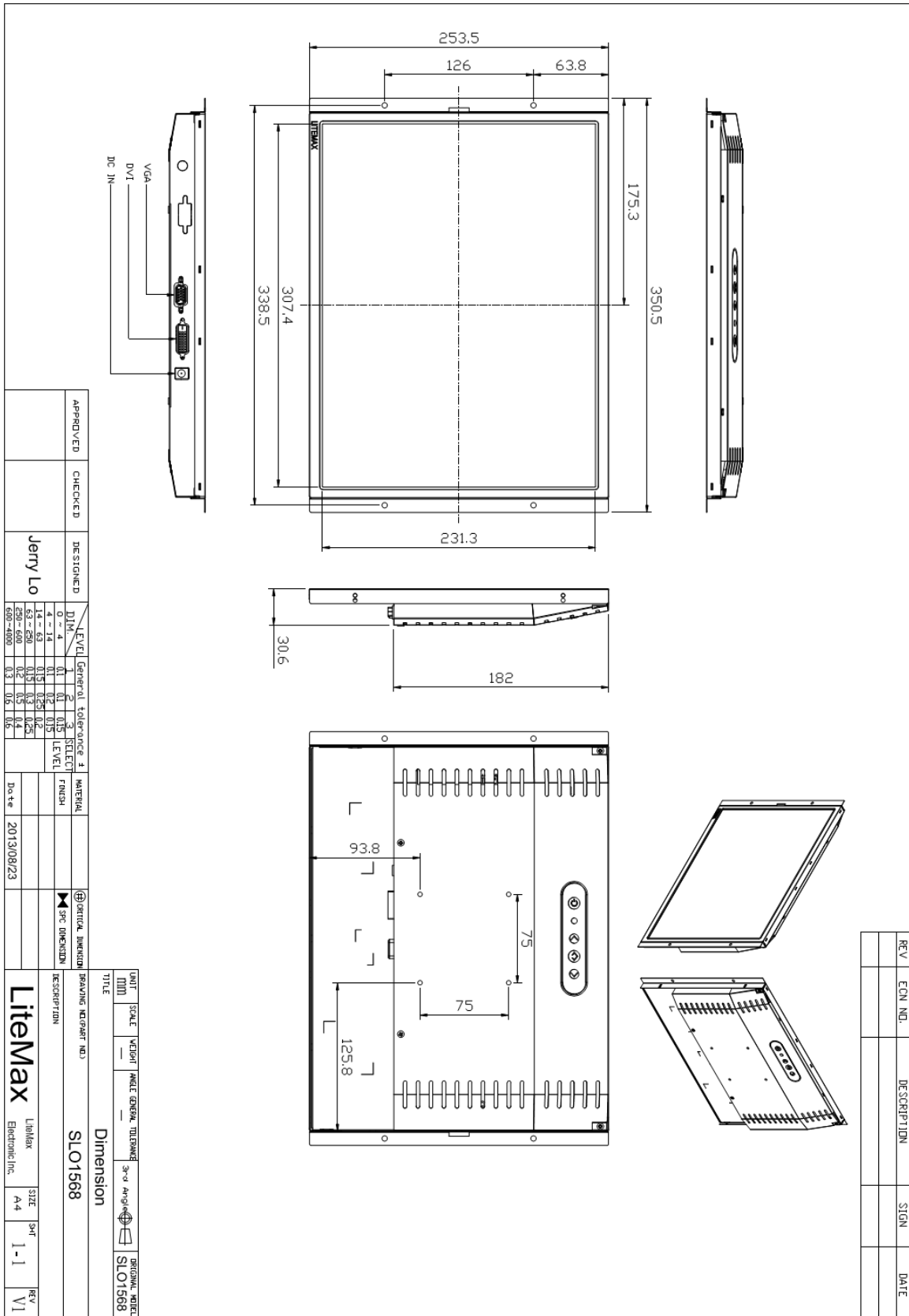
**SLO** = Panel+LED Driving Board+Control Board+Housing



**Mechanical Drawing**

**Outline Dimensions**

Unit:mm



APPROVED	CHECKED	DESIGNED	Jerry Lo
LEVEL		General tolerance	1 2 3
DIM		SELECT	LEVEL
0 ~ 4	0.1	0.1	0.15
4 ~ 14	0.1	0.2	0.2
14 ~ 25	0.15	0.25	0.2
25 ~ 40	0.2	0.3	0.4
40 ~ 60	0.2	0.5	0.4
60 ~ 400	0.3	0.5	0.5
400 ~ 4000	0.3	0.5	0.5
DATE	2013/08/23		

UNIT	SCALE	WEIGHT	ANGLE	GENERAL TOLERANCE	3rd Angle Projection	ORIGINAL IMAGE
MM						SLO1568
TITLE						
Dimension						
DRAWING NUMBER NO.						
SLO1568						
DESCRIPTION						
Litemax						
Liblix						
Electronic Inc.						
SIZE	A4		SHEET		1 - 1	
REV	VI					

REV	EQUI. NO.	DESCRIPTION	SIGN	DATE



### Ordering Information

Part Number	Description
<b>SLO1568-ENB-I21</b>	15",1600nits,XGA,LID15A,AD6038GA,O/B,DC12V,3in1,V3
<b>SLO1568-ENB-I22</b>	15",1600nits,XGA,LID15A,AD6038GA,O/B,DC12V,5in1,V3
<b>SLO1568-ENB-I23</b>	15",1600nits,XGA,LID15A,AD6038GD,O/B,DC12V,3in1,V3
<b>SLO1568-ENB-I24</b>	15",1600nits,XGA,LID15A,AD6038GD,O/B,DC12V,5in1,V3

### Optional Accessories

Part Number	Description
<b>840612031101</b>	ADAPTER.12V.3.33A.40W.G99-KPL040F-N051.DC Plug 2.1*5.5,P
<b>810618301010</b>	CABLE.POWER.AC.1830mm USA type
<b>810618301090</b>	CABLE,POWER,AC,1830mm Europe type
<b>810618301050</b>	CABLE.POWER.AC.1830mm UK type
<b>810618301170</b>	CABLE.POWER,AC,1830mm Australia type
<b>810618301031</b>	CABLE.POWER.AC.1830mm Japan type